

> Gamko

Product Selection Guide

January 2018



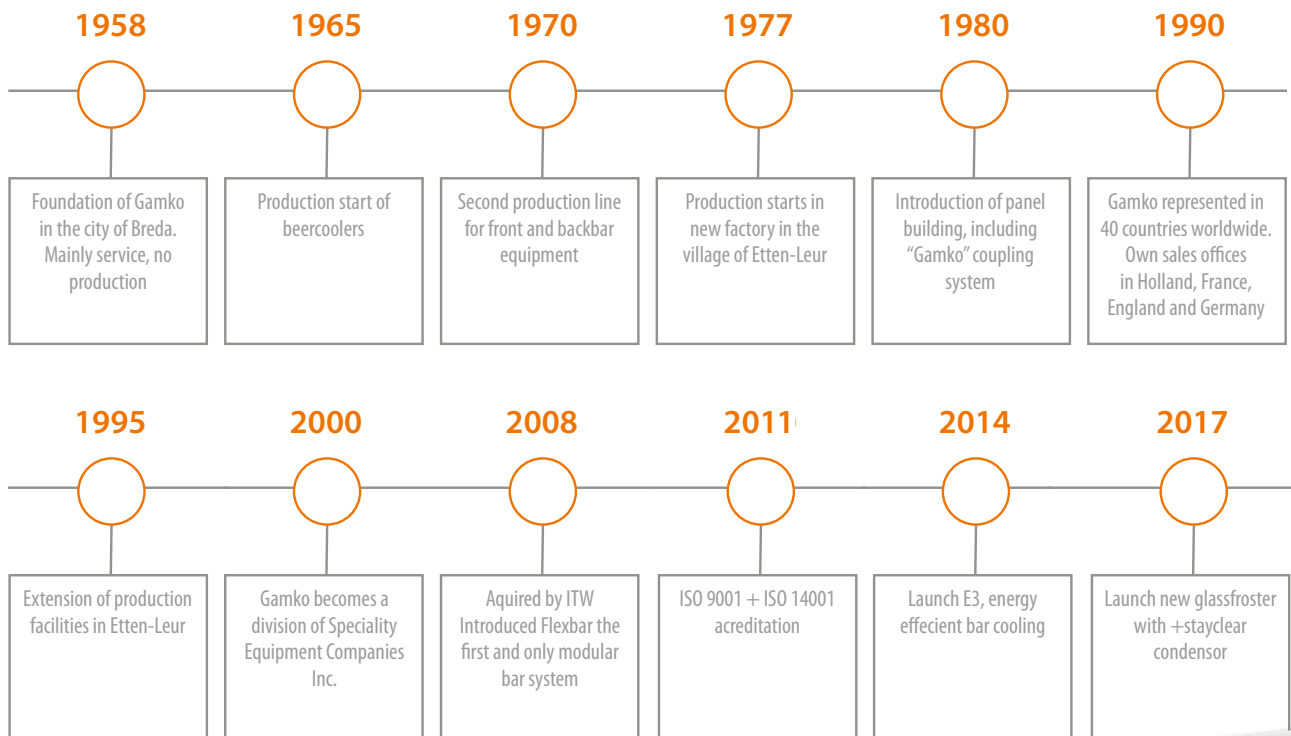
Gamko is a leading manufacturer and supplier of professional coolers for the bar and leisure industry.

About Gamko

Founded in 1958 by pioneering Dutch engineer, Mr. van Gammeren, the Gamko family of experts has grown, and are all passionate about our products and services.

We are global leaders in the manufacture of professional drinks coolers for the bar, leisure and catering industries. Gamko products have delivered our unique blend of inventive spirit and precision engineering to customers across the world since 1958, revolutionising the professional drinks cooling industry.

We are proud to design, manufacture and supply our impressive range of drinks cooling equipment tailored to meet the changing needs of the bar, leisure and catering industries. Gamko lead from experience - "an international player with world-class products"



Gamko lead from experience. With more than 50 years of refrigeration expertise we have always been experts in our industry.



We are proud of our small beginnings and rich heritage. Our continued purpose is our dedication to excellence, ingenuity and innovation, driven by customer demand and customer service.

Our Mission Statement

To inspire, innovate and succeed through our products and actions. We will deliver fully tailored, trusted, stylish products, always delivering a perfectly chilled drink on demand.

Our Vision

We will continually inspire our customers by providing the best solutions to meet their unique and individual requirements:

- › We will nurture and develop our partnerships with our customers, and champion the expertise of our people.
- › We will be responsible towards the environment, helping to create a sustainable future.

Our company values are:

Trust

A successful and proven history

Heritage

We have always been bar cooling equipment experts

Quality

Dutch engineering. From our factory in the Netherlands we deliver world class engineering solutions, ensuring our drinks cooling products are of the highest quality

Flexibility

We always provide a unique and flexible approach to all of our customer's requirements.

Innovation

Advanced design / technology

Sustainable

We behave responsibly towards the environment we live and work in.

Collaboration

We engage and work with our intermediaries and customers to find the best solution.

People

Our people are experts in professional drinks cooling. A highly qualified, experienced and above all a passionate team dedicated to the pursuit of excellence.



Maxiglass Noverta Premium

Maxiglass Noverta Premium coolers with glass doors are specially designed to present bottled drinks in an aesthetically pleasing manner, reach the perfect temperature, and maintain it.

Thanks to the Maxiglass cooler, the beverage inside the bottle is always served at the correct temperature, whilst the taste and quality is guaranteed. Maxiglass bottle coolers are available with energy efficient properties (a maximum capacity of 315 litres and 3 doors) and as a tall upright model (a maximum capacity of 500 litres and 2 doors).

Maxiglass Noverta Premium

- › Energy efficient professional bottle coolers
- › Reduced power consumption
- › Environmentally friendly
- › Maximum presentation
- › Standard with Hydrocarbon R600a, R134a at an additional price

The new energy efficient Maxiglass Noverta Premium will save you money and contribute to protecting the environment thanks to its lower energy costs. The new design makes the Maxiglass the leading choice for presenting beverages in bottles and cans. Fitted with an energy efficient LED light with even, clear light distribution in order to display the contents of the cooler as effectively as possible.



› MG2/250SD

Fitted with 2 glass sliding doors with an anthracite door frame and kickplate and exterior made of anthracite steel panels



MG2/250DD ◀

Fitted with 2 hinged solid anthracite doors and exterior made of anthracite steel panels



LG2/315GCS84 ◀

Fitted with 3 hinged glass doors with a stainless steel door frame and kick plate. Exterior made of anthracite steel panels



Specifications MG2



Dimensions (w x d x h) mm	602 x 536 x 900/910	900 x 536 x 900/910	1200 x 536 x 900/910	1350 x 536 x 900/910	602 x 530 x 1800/1825	900 x 530 x 1800/1825
Storage Capacity (33cl bottles)	144	207	289	326	310	480
Internal Capacity (litres)	150	250	275	315	300	500
Cooling Capacity (Watts)	262	262	460	460	515	515
Power Consumption (Watts)*	135	140	235	240	245	245

Specifications LG2



Dimensions (w x d x h) mm	602 x 536 x 840/850	900 x 536 x 840/850	1350 x 536 x 840/850
Storage Capacity (33cl bottles)	144	207	326
Internal Capacity (litres)	150	250	315
Cooling Capacity (Watts)	262	262	460
Power Consumption (Watts)*	135	140	240

Maximum presentation and minimum power consumption with the Maxiglass Noverta Premium.

The models of the Maxiglass bottle cooler have been fully modernised and improved inside and out. A modern and sleek design combined with improved technologies and components means that the Maxiglass isn't just a fantastic product because of the way in which it presents its contents, but also because it cools beverages in bottles and/or cans in an energy efficient manner.

Standard all Maxiglass models are delivered with white LED lights. Coloured lighting (Dancing lights) is an option.



➤ MG2/500GCS

Fitted with 2 hinged glass doors with a stainless steel door frame and machine front. Exterior made of stainless steel panels



MG2/300RG ◀

Fitted with a right hinged glass door with an anthracite door frame and machine front. Exterior made of anthracite steel panels



◀ Shelves

Adjustable shelves and shelf support clips are standard delivered with each cabinet.



^ Display

Variable temperature calibration visible on display. Adjust the temperature to your requirements. Save even more energy by slightly increasing the temperature at closing time.



Fans ➤

Efficient and energy saving fans to ensure that cold air is effectively and quickly distributed throughout the cooler.



◀ Handles

Anthracite models with a hinged door are fitted with a stylish and robust integral handle which is installed across the entire length of the cooler.

E3 undercounter refrigerators

Introducing Gamko's most energy efficient bottle cooler - E3 Noverta Premium, offering cool clear bottled beverage presentation, with a sleek, stylish look, perfect for both your front and back bar areas.



3 reasons why you should choose Gamko E3:

- 1 Largest bottle capacity on the market for back bar solutions
- 2 Saves you 60% energy/year
- 3 This equates to € 250/year = 100 bottles of beer! Over 10 years, the money you save in energy could pay for your next Gamko drinks cooler

Professional energy efficient refrigeration with increased storage capacity. Designed and manufactured by our leading team of Dutch engineers, the E3 benefits from the wealth of technology found across the Gamko range, to deliver exceptional storage capacity and outstanding fast beverage cooling.

E3 bottle capacity:

344 x 33cl bottles - 2 door
531 x 33cl bottles - 3 door
722 x 33cl bottles - 4 door



➤ E3/222GMUCS84

Plug ready bottle cooler. Exterior made of stainless steel and fitted with 3 glass doors



E3/22GMU84 ◀

Exterior made of anthracite steel panels and fitted with 2 glass doors



E3/2222MUCS84 ◀

Plug ready bottle cooler. Exterior made of stainless steel and fitted with 4 solid doors



Specificaties E3



E3/22MU84



E3/22VS84



E3/222MU84



E3/222VS84



E3/2222MU84



E3/2222VS84

Dimensions (w x d x h) mm *	1434 x 512 x 840/860-880	1184 x 545 x 840/860-880	1988 x 512 x 840/860-880	1738 x 545 x 840/860-880	2542 x 512 x 840/860-880	2292 x 545 x 840/860-880
Storage Capacity (30cl bottles)	344	344	531	531	722	738
Plugready vs remote	plugready	remote	plugready	remote	plugready	remote
Cooling Capacity Integral (Watts)	515	515	515	515	515	515
Power Consumption Remote (Watts)	Solid door: 210 W ^①	Solid door: 30 W ^②	Solid door: 210 W ^①	Solid door: 30 W ^②	Solid door: 210 W ^①	Solid door: 30 W ^②
	Glass door: 220 W ^①	Glass door: 40 W ^②	Glass door: 230 W ^①	Glass door: 46 W ^②	Glass door: 235 W ^①	Glass door: 54 W ^②

① Conditions: Te = -5°C | Tc = +45°C | ambient temperature = +25°C

② Power consumption of the cooler excluding the separately installed condensing unit.

* Depth of the cabinet is excluding handgrip, including power-supply-connection. During installation: add 40mm to the overall depth (in conjunction with the appliance's plug) and add 10 mm to the total width.

The E3 Noverta Premium is the next generation of undercounter bottle coolers.

The E3 guarantees a 60% reduction in annual consumption compared to its predecessor*, offering low operating costs whilst protecting the environment.

Drawer cassettes

Why not add solid drawers to your E3 bottle cooler and you will not only create a practical, but also a sleek and ergonomic bar layout. The E3 drawers are mounted with telescopic rails and fit into any type of E3 cooler. The drawers are fitted with the same broad and sturdy handles as on solid doors and have a lock feature (lock needs to be ordered separately). For each drawer you can fit a minimum of 42 x 33cl bottles.



Above configuration shows a E3/236MU



The E3 gives you

- > Faster pull down time ensuring your drinks are perfect at point of consumption
- > Revolutionary low power usage
- > Superb cooling performance
- > Natural R600a hydrocarbon refrigerant as standard. R134a models are available too at an additional price
- > Secure locking system on glass doors as standard keeping your contents safe and secure
- > Electronic thermostat display so you can check the temperature of the contents
- > Automatic defrost function for quick defrost and easy cleaning
- > Efficient LED lighting on glass doors with uniform light distribution to show the drinks in a really appealing light

Annual savings with the E3 bottle coolers*

Type	Energy usage in KWh/day	Energy savings in KWh/day	Savings in %	Savings per year in £ Pounds	Savings after 10 years in £ Pounds
E3/22MU	500	750	60%	165,00	1.650,00
E3/222MU	700	1200	63%	264,00	2.640,00
E3/2222MU	750	1550	63%	396,00	3.960,00
E3/22GMU	700	1300	65%	286,00	2.860,00
E3/222GMU	950	1450	60%	319,00	3.190,00
E3/2222GMU	1050	1500	67%	330,00	3.300,00



* Calculations are based on a KWh price of GBP 0.22. Tests conducted on Gamko coolers were carried out at customer sites in real life conditions. (The test includes built-in and frequent opening of doors and replenishment with non-refrigerated bottles).

Flexbar Modular Bar System

Gamko pioneered the modular bar system in 1979, providing customers with detachable sections. Since then we have continually improved our offering which is called - Flexbar, as the name suggests: flexibility is what counts. Today it is one of the most popular flexible bottle cooling solutions on the market.

Curved Bars

Curved bars are also possible with Flexbar. Gamko manufactures and supplies special custom made corner pieces used when building a round or curved bar station.

Flexbar

- › Flexible and multi-purpose modular bar system
- › Configure your ideal bar - choose from: doors, drawers, bottle racks, refrigerated or unrefrigerated segments, and/or coffee waste drawers.
- › Extensive number of possibilities - create your bespoke bar design
- › Create an unique atmosphere with coloured EQUAL-LED lighting
- › Custom made project drawing on request, free of charge
- › Easy installation and servicing
- › Can be supplied with Central Electronic Locking System



Machine units and evaporator units

These units are the heart of a FLEXBAR installation. The refrigerated sections are connected to this. To be able to ensure that lighting and/or locks operate centrally, you select a type of machine unit or evaporator unit with the driver needed for this.



› X/MU

Machine unit with anthracite front.
Dimensions (W x D x H):
410 x 589 x 840/860-880mm



› X/VS20

Anthracite front(s).
Dimensions (W x D x H):
200 x 589 x 840/860-880mm

Greater flexibility, Greater choice



X/2RS

X/3DS

X/5DS

X/6DS

X/2LSG



X/2LA

X/3DA

X/5DA

X/6DA

X/7DA



X/2LG

X/3DG

X/5DG

X/6DG



Ergonomic handle

The sturdy robust, metal handle consists of two components. The aluminium exterior is responsible for the solid build, while the soft touch rubber interior is responsible for excellent grip, even with wet hands.



White and coloured lighting

As standard all glass sections are supplied with white EQUAL-LED lighting. The FLEXBAR can also be supplied with coloured EQUAL-LED lighting. Using the supplied remote control, you can set the entire bar layout to one colour, allow the colour to change automatically and dim the light intensity. You can get your FLEXBAR lighting to time with the music.

Choosing your Gamko Flexbar in 3 steps:

- Step 1** Select a machine unit or evaporator unit and incorporate an applicable driver for light and/or lock
- Step 2** Connect storage sections to the machine unit or to the evaporator unit and finish it with a set of end panels
- Step 3** Make the Flexbar even more complete and attractive by incorporating freezer units, corner pieces, unrefrigerated sections, counter tops and cocktail accessories.

Storage Segments

Storage Segments with glazed, anthracite or ferritic stainless steel front are available in the variants above in two width dimensions: 41 cm and 54 cm.

End panels

End panels are always needed to finish the total bar configuration.

In between panels

In between panels are used between linked segments. An insulated in between panel is used to create separate temperature zones in one configuration or for hygienic reasons (in combination with waste bin segments).



Central Electronic Locking System

The FLEXBAR can be supplied with a patented and fully integrated Central Electronic Locking System (CELS). Using the machine unit or evaporator fitted with a lock control, the bar can be fully locked down with one simple action. Straightforward, fast, safe and no section can be overlooked.

Flexbar Modular Bar System - Front Bar

Quick and easy access to drinks, glasses and cups are all important in a front bar area. Gamko's Total Bar Solutions are specifically designed to make front bar service as easy and fast as possible by having everything you need, exactly where you need it.



Flexbar solid drawer and door modules provide customers with greater flexibility and greater choice for a front bar. You can choose which modules you need, where you need them and at what temperatures (ambient or heated) to store a wide variety of things you need in your front bar area. Easy to install with height adjustable feet, Flexbar is the perfect front bar partner.



Flexbar eEquip

Customise the look of your bar by adding eEquip fronts to the Flexbar units you choose. Flexbar eEquip adds an extra dimension of sophistication to the overall atmosphere and experience of your bar, creating the perfect environment for your customers.

With seamless eEquip fronts you can be your own interior designer, affording you the flexibility to be totally creative. Design your own bar, using coated fronts which blend with the rest of your décor. You can also create your own eye-catching design.

- › The Flexbar eEquip lets you create a bar which is unique
- › Integrated front handle as standard
- › Option to add a handle of your choice (to be supplied by the customer)
- › Available with solid doors, glass doors and solid drawers



Example of an eEquip design



Example of an eEquip design

Flexbar Barista Coffee Station

Gamko extended its Flexbar range to offer the Barista Coffee Station - a neat, all in one under counter offering to store everything you need for that perfect cup of coffee.

You can choose how many models you would like in your Barista Coffee Station from two to five or even more depending on how small or large the area is that you have available for a coffee station.



- Warm area for your:
 - Glasses or cups, ready and waiting for tea and coffee orders
- Chilled area (requires additional machine unit) to keep your Milk and cream at a guaranteed constant temperature
- Ambient area for your:
 - Water to prepare hot drinks
 - Coffee knock out
 - Waste bin
- Neutral area for storage including:
 - Sugar
 - Crockery
 - Coffee/tea



Example of a typical Barista Station

General characteristics Flexbar

- Specify your desired refrigerated and unrefrigerated storage.
- Create a plug ready modular bar configuration or make it suitable for a split design with an evaporator.
- Continue to expand with sections in two width measurements: 41 cm and 54 cm.
- Available in 3 designs: with fronts in anthracite, in ferritic stainless steel front and in glass with white LED lighting with even light distribution (EQUAL LED). All FLEXBAR fronts have a organic external design, are seamless and can easily be cleaned, are robust, solid, sustainable and fit into any interior.
- Create for instance, a right-angled bar, a curved bar, a bar with doors on both sides, or a cocktail bar with professional stainless steel accessories or a combination of these.
- Make it stand out with coloured EQUAL-LED lighting combined with glass storage segments.
- Prevent theft with the Central Electronic Locking System (patented CELS).
- Create variety with handy extras such as drawers, bottle racks, bottle coolers in the front of the counter top, unrefrigerated sections with rinsing racks and waste bins, coffee-waste drawers and stainless steel (cocktail) accessories.
- Quick to assemble on site thanks to the Cam Lock system and, where necessary, complete with specific installation instructions.
- Our project team can design your bar layout (free of charge).



Counter Top Coolers and Freezers

Gamko manufactures and supplies convenient coolers and freezers suitable for counter top or surface-mounting.

These counter top coolers/freezers are plug ready and ideal for serving chilled wine, liqueur or vodka by the glass, at a constant temperature. The cooler provides a good view of the bottles from above. As a result you can conveniently and quickly see what you are looking for to ensure smooth service behind the bar. In addition, a bottle cooler built into the counter top is a real eye-catcher, and when you combine it with the correct glasses, you give the bar a professional image.

Bottle cooler & freezer counter top

- › Compact top loader for bottles
- › Perfect for counter top or surface-mounting
- › For chilling or freezing
- › Ideal for quick service

General characteristics

- › Plug ready
- › For chilling or freezing
- › Cooling capacity 156W
- › Power consumption 175W
- › Interior made of high-grade stainless AISI 304
- › Ideal for inset and surface-mounting
- › Temperature coolers: +4° C / +8° C
- › Adjustable temperature range coolers from: 0° C to +15° C
- › Temperature freezers: -4° C / -8° C
- › Adjustable temperature range freezers from 0° C / -15° C



› VK12

Bottle cooler counter top suitable for inset



› VK12F

Bottle freezer counter top suitable for inset

› VK10

Bottle cooler counter top suitable for inset and surface-mounting (fitted with rubber feet)

› VK10F

Bottle freezer counter top suitable for inset and surface-mounting (fitted with rubber feet)



Under bar & Panel construction keg coolers

Quickly achieve the correct beer temperature and best taste experience

Gamko manufactures and supplies premium quality coolers for kegs and/or crates. Gamko supplies 2 ranges of keg coolers: keg coolers for under the bar and panel construction keg coolers. The panel construction keg coolers are specially developed for concealed installation and/or in difficult accessible places.

Noverta Premium Keg Coolers

- > Plug ready
- > Revolutionary low power consumption
- > Very short chilling time
- > Consistent temperature of the kegs in relation to one another
- > Natural refrigerant R600a
- > Insertion of python line possible on both sides
- > Low-energy LED lighting
- > Electronic thermostat with digital display

FK2-25/4R & FK2-25/4L <

1-door keg cooler with machine unit to the left or right



FKG20/2 <

½-door keg cooler with machine unit to right



> FK2-25/6R & FK2-25/6L

1½-door keg cooler with machine unit to the left or right



> FK2-25/8R & FK2-25/8L

2-door keg cooler with machine unit to the left or right



Panel construction keg coolers & matching machine units

Gamko panel construction keg coolers are supplied as ready to assemble panels. In this way, they can also be installed in difficult-to-access places, such as a cellar. An installer assembles the keg cooler for you and connects the machine unit. Panel construction keg cabinets are also ideally suited for pre-chilling kegs and/or crates or bottle drinks. The coolers can be supplied in five variants in terms of storage capacity. The keg coolers are always combined with the plug ready FK/MU machine unit. A Gamko machine unit is always fitted on top of the cooler for optimal distribution of cold air.



Glass Frosters

The brand new range of Gamko glass frosters are guaranteed to create the theatrical display you need, bringing customers to the bar. Featuring new technology and quality design, this range offers your bar genuine benefits by becoming a spectacular focal point, helping to increase sales.

Our new glass frosters feature the award winning +stayclear condenser, making them not only stylish to look at but reliable and high performing. With a range of finishes and options available, they will seamlessly fit in your bar design.

- › The award winning +stayclear condenser as part of its efficient and powerful cooling system
- › A spectacular focal point, leading customers to your bar
- › The perfect place to display glasses, liqueurs or spirits
- › A technologically advanced system to prevent condensation
- › A range of styles to suit all bars
- › Easy to service design

General characteristics

- › Plug ready
- › Efficient cooling system with +stayclear condensor
- › Condensation prevention system on all glass door models
- › Heated frame prevents the build-up of condensation
- › LED lighting
- › Adjustable height of 840/880mm
- › Exchangeable magnetic gaskets
- › Automatic defrost
- › Electronic thermostat with digital display
- › Temperature: -10° C / -17° C



› GF/100RS

Exterior made of anthracite and fitted with solid door, right-hinged

› GF/100LS

Exterior made of anthracite and fitted with solid door, left-hinged



› GF/100RG

Exterior made of anthracite and fitted with glass door, right-hinged

› GF/100LG

Exterior made of anthracite and fitted with glass door, left-hinged



› GF/100RCS

Exterior made of anthracite skinplate and fitted with a stainless steel solid door, right-hinged

› GF/100LCS

Exterior made of anthracite skinplate and fitted with a stainless steel solid door, left-hinged



› GF/100RGCS

Exterior made of anthracite skinplate and fitted with a stainless glass door, right-hinged

› GF/100LGCS

Exterior made of anthracite skinplate and fitted with a stainless glass door, left-hinged

By choosing one of our glass frosters you can be confident you have invested in the most reliable and technically advanced unit you could want, and more importantly? Your customers will want to become part of the drinking experience this froster creates - meaning more money in your till!



A FLEXBAR installation can be expanded with a separate freezer. These standalone glass frosters have their own machine unit. With this separate freezer you can easily create a separate temperature zone within the bar installation. The freezer can be supplied with an anthracite glazed front or with a solid anthracite front.



- **XF/100RS**
Exterior made of anthracite and fitted with solid door, right-hinged
- **XF/100LS**
Exterior made of anthracite and fitted with solid door, left-hinged



- **XF/100RG**
Exterior made of anthracite and fitted with glass door, right-hinged
- **XF/100LG**
Exterior made of anthracite and fitted with glass door, left-hinged

General characteristics

- Plug ready
- Efficient cooling system with +stayclear condensor
- Fitted with 1 door, right-hinged or left-hinged
- Condensation prevention system on all glass door models
- LED lighting
- Adjustable height of 840/880mm
- Exchangeable magnetic gaskets
- Automatic defrost
- Electronic thermostat with digital display
- Temperature: -10° C / -17° C



XF/100GC - Coloured Equal-LED possibilities

Waste Disposal Coolers

Gamko produces and supplies professional coolers for the refrigerated storage of food waste. In view of the ever more stringent regulations governing food safety, this is an indispensable supplement in the kitchen. Refrigerated storage of waste is hygienic and prevents nasty unwanted odours, food contamination or vermin. Ideal for restaurants and commercial kitchens, as well as shops, which prepare and/or sell perishable food items.

The powerful machine unit that goes with it ensures that the temperature in the container is guaranteed to constantly remain below 5 degrees Celsius. The sophisticated connection system facilitates quick and easy installation, even possible from the inside, ensuring that the waste cooler is also ideal for installation in smaller spaces. The hygienic stainless steel base is easy to keep clean and slopes slightly, making bins easy to move. Two versions of the Gamko waste coolers can be supplied: for chilling one or two bins made of hygienic stainless steel, or practical anthracite-coloured sheet metal. The waste disposal coolers are supplied without wheelie bins.

General characteristics

- › Works only in combination with a machine unit KFK/MUCS
- › Easy installation
- › Also suitable for small spaces
- › Shut-off valve is kept open by pneumatic spring
- › Robust closure including lock
- › Sloping stainless steel base
- › Energy-saving thanks to 40mm thick insulation
- › Easy to keep clean
- › Exclusive of wheelie bins
- › Option: electronic evaporator tray KFK-VL
- › Temperature: +2° C / +5° C
- › Adjustable temperature range from +2° C to +12° C



› KFK/1CS

Suitable for 1 wheelie bin with a capacity of 240 litres. Interior and exterior made of stainless steel (AISI304). Machine unit KFK/MUCS not included.



› KFK/2CS

Suitable for 2 wheelie bins each with a capacity of 240 litres. Interior and exterior made of stainless steel (AISI304). Machine unit KFK/MUCS not included.



KFK/1 ◀

Suitable for 1 wheelie bin with a capacity of 240 litres. Exterior made of anthracite coated steel panels and interior made of silver-grey coated steel panels. Machine unit KFK/MUCS not included.



KFK/2 ◀

Suitable for 2 wheelie bins each with a capacity of 240 litres. Exterior made of anthracite coated steel panels and interior made of silver-grey coated steel panels. Machine unit KFK/MUCS not included.



› KFK/MUCS

Machine unit made of stainless steel (AISI304).



Gamko Quality

Gamko supports a broad range of customers including architects, bar owners and hotel chains, offering smart bar solutions in diverse locations, to meet a huge variety of business needs.

We work to ensure our product range is as flexible as our customers need it to be, adapting to changing markets, and working in partnership with customers to exceed their expectations.

Each customer is unique, each bar is unique, each Gamko product provides a unique stylish solution: seamlessly complimenting the look and feel of any bar. We are proud to design, manufacture and supply our impressive range of drinks

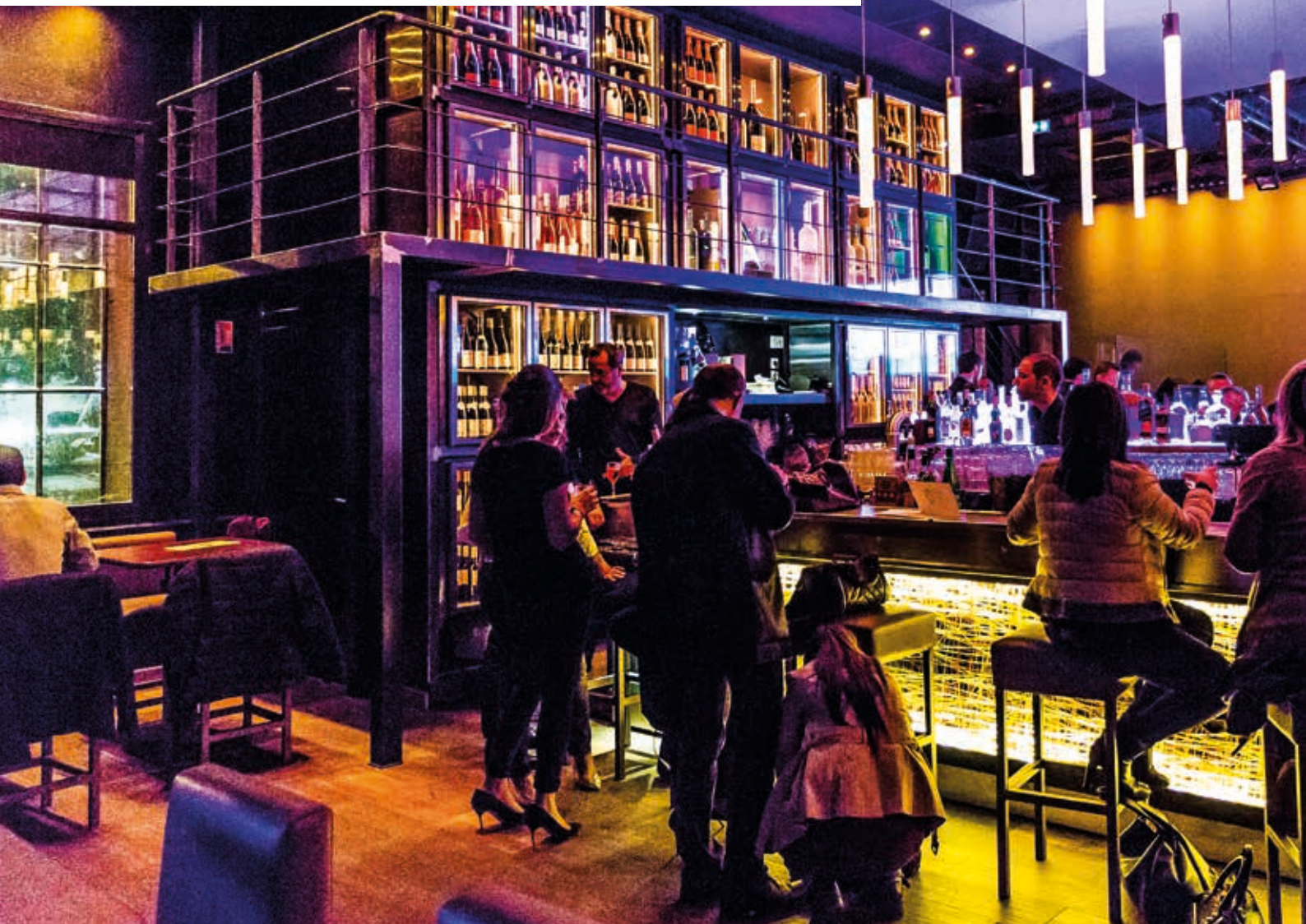
cooling equipment tailored to meet the changing needs of the bar, leisure and catering industries.

Gamko is an ISO9001 and ISO14001 certified company.

With a Gamko bar cooler you know you are getting a high quality bar cooling product manufactured in an environmentally responsible way.

Gamko Key Product features

- Low energy LED lighting
- Increased bottle capacity giving you more for your money
- Fast pull down
- Easy to service
- Undercounter/Upright cooler solutions
- Stylish anthracite or Stainless steel finish



Gamko manufactures and supplies professional coolers for the bar and leisure industry

Gamko is a leading manufacturer and supplier of professional coolers for the bar and leisure industry. Since its establishment in 1958, Gamko has grown into an international company, which focuses mainly on manufacturing, selling and maintaining a complete range of professional drinks coolers.

Quality from Europe

With its own production and research department in Etten-Leur, The Netherlands, Gamko develops, manufactures and supplies products that are tailored to the needs and quality requirements of today's catering industry. Aspects such as design, functionality, customer satisfaction and the environment play a major role in this. Gamko is ISO9001- and ISO14001-certified, guaranteeing the quality of our products and processes and ensuring continuous improvement.

Modern production of equipment guarantees an excellent price-quality ratio and because production takes place in the Netherlands, Gamko also has highly flexible delivery times. If you choose Gamko, then you will be choosing quality, flexibility and sustainability.

Gamko: an international player with world-class products

Gamko has its own export department with a worldwide network of agents and its own sales organisations in Benelux, the United Kingdom and France. Our sales organisation delivers a complete range of cooling equipment, in particular for the bar and leisure industry right throughout the world. If after reading this brochure and/or documentation you would like more information about the products listed below, please feel free to contact Gamko.

No rights can be derived from the information as shown in this brochure. Content, technical features and prices subject to change. 01/2018

